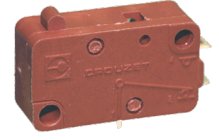


MINIATURE MICROSWITCHES - HEAVY DUTY

83160

- › Coil spring snap-action mechanism with wiping contacts
- › Ratings up to 16(4) A 250 V~ and 10(4) A 400 V~
- › Version with magnetic blowout for enhanced DC breaking capacity up to 5 A 250 V---
- › Long service life: 200 000 operations at nominal rating and up to 10 millions on light load
- › Contact gap less or greater than 3 mm (micro-disconnection (μ) or full disconnection)
- › Operating temperature -40 °C up to +150 °C
- › cURus and ENEC approved
- › Wide choice of actuators: pinned or flexible, stainless steel or plastic



Main specifications

			Standard 831600	Reduced force 831603	Low force 831604	Wide contact gap 831606	High DC rating 831606 SP3697
Function	Connections	Actuators					
I (changeover)	W2 (solder)	No	83160005	83160320	83160420	83160602	83160664
I (changeover)	W3 (QC 6.3x0.8)	No	83160006	83160301	83160401	83160601	83160679
I (changeover)	W6 (QC 4.8x0.5)	No	83160045	83160321	83160415	●*	●*
I (changeover)	X1-X2 (PCB straight-rear)	No	●	●	●	●*	●*
I (changeover)	X3 (PCB front)	No	83160143	●	●	●*	●*
R (normally closed)	W2 (solder)	No	83160001	●	●	●	●
R (normally closed)	W3 (QC 6.3x0.8)	No	83160003	83160319	●	83160621	●
R (normally closed)	W6 (QC 4.8x0.5)	No	●	●	●	●*	●*
R (normally closed)	X2-X3 (PCB rear-front)	No	●	●	●	●*	●*
C (normally open)	W2 (solder)	No	83160002	83160324	●	83160603	●
C (normally open)	W3 (QC 6.3x0.8)	No	83160004	83160316	83160402	83160622	●
C (normally open)	W6 (QC 4.8x0.5)	No	83160047	●	●	●*	●*
C (normally open)	X2-X3 (PCB rear-front)	No	●	●	●	●*	●*
Configurations with actuators		Yes	See page 4	See page 4	See page 4	See page 4	See page 4
Electrical characteristics							
Rating nominal / 250 V AC (A)			16	10	6	16	16
Rating nominal / 250 V DC (A) **			0.5	0.5	0.4	0.8	5
Rating thermal / 250 V (A)			20	15	10	20	20
Rating ENEC/UL / 250 V AC (A)			16(4) - 8 GP	10(4) - 8 GP	6(2) - 6 GP	16(4) - 10 GP	-
Mechanical characteristics							
Maximum operating force (N)			4	2	1	5	5
Min. Release force (N)			1.5	0.6	0.3	1	1
Maximum total travel force (N)			6.5	3	1.5	7	7
Max. Allowable overtravel force (N)			20	20	20	20	20
Rest position max. (mm)			15.6	15.6	15.6	15.7	15.7
Operating position (mm)			14.8 ±0.3	14.8 ±0.3	14.7 ±0.3	14.6 ±0.4	14.6 ±0.4
Maximum differential travel (mm)			0.3	0.4	0.35	0.7	0.7
Min. overtravel CRA (mm)			1.3	1.3	1.3	1	1
Ambient operating temperature (°C)			-40 → +125	-40 → +125	-40 → +125	-40 → +125	-40 → +125
Mechanical life (operations)			10 ⁷	10 ⁷	10 ⁷	10 ⁶	10 ⁶
Contact gap (mm)			1.2	1.2	1.2	3.2	3.2
Weight (g)			6.7	6.7	6.7	6.7	6.7

* Please consult us ** with resistive load

Additional specifications

- Case, Button: PBT GF (UL 94-V0 / GWFI 960 °C)
PA66 GF (GWFI 960 °C) - 831606 SP3697 case
- Contacts: silver alloy (gold-plated silver alloy : on request)
- Terminals: brass (except W2/X : copper nickel), silver plated common
- Levers: stainless steel or polyamide, polyamide roller
- Degree of protection: IP40 (mechanism)
- Proof tracking index: PTI 250 (PTI 600 on 831606 SP3697)
- Recommended min actuating speed: 0.1 mm/s
- Conformity / Certifications:

Product adaptations

- › Special levers: special shapes and lengths
- › Special connections: angled, screw with clamp (W5), full wiring with custom connector...
- › Telescopic plunger and adjustable fixing by threaded barrel: plastic version (153L accessory) or metal version (SP9603 or 83556, single or double pole)
- › High operating temperature: +150 °C
- › 400 Vac ENEC/cURus approved versions (SP9654)



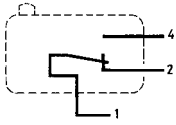
Standard product

Product made to order

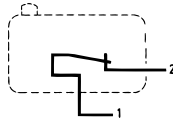
Contact us

Principles

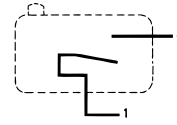
Single break snap-action switch
Changeover - SPDT (form C)



Normally closed - SPST-NC (form B)

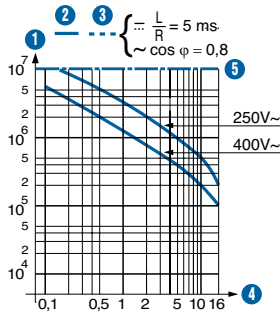


Normally open - SPST-NO (form A)

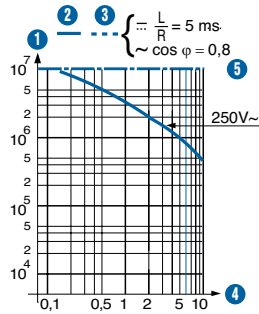


Curves

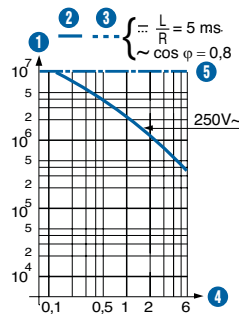
Operating curve for type 831600



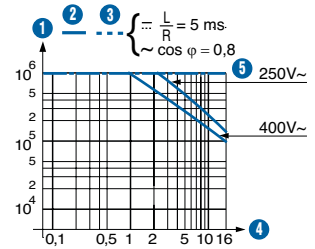
Operating curve for type 831603



Operating curve for type 831604



Operating curve for types 831606 and 831606 SP3697



- 1 Number of cycles
- 2 Resistive circuit
- 3 Inductive circuit
- 4 Current in Amps
- 5 Mechanical life limit

- 1 Number of cycles
- 2 Resistive circuit
- 3 Inductive circuit
- 4 Current in Amps
- 5 Mechanical life limit

- 1 Number of cycles
- 2 Resistive circuit
- 3 Inductive circuit
- 4 Current in Amps
- 5 Mechanical life limit

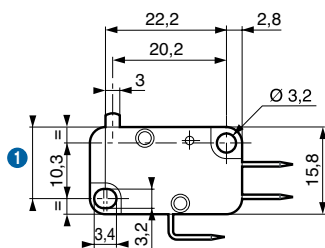
- 1 Number of cycles
- 2 Resistive circuit
- 3 Inductive circuit
- 4 Current in Amps
- 5 Mechanical life limit

DC electrical life for type 831606 SP3697: 250 V ~ 5 A resistif 300 000 cycles
 250 V ~ 1,5 A L/R 5 ms 30 000 cycles
 250 V ~ 0,5 A L/R 50 ms 50 000 cycles
 125 V ~ 3 A L/R 5 ms 30 000 cycles

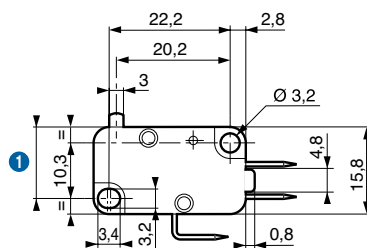
Dimensions

Products

831600 / 3 / 4 / 6



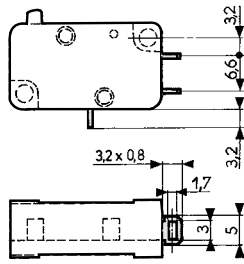
831606 SP3697



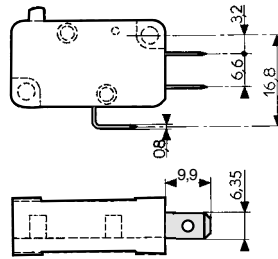
1 Total travel position = 13.2 max.

Connections

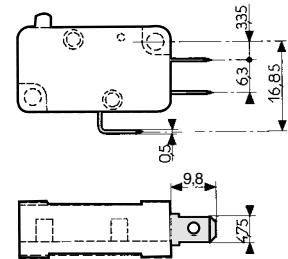
W2 solder



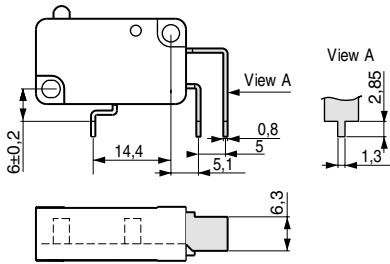
W3 quick-connect 6.3 x 0.8



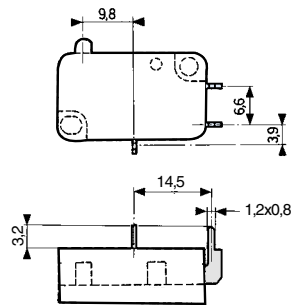
W6 quick-connect 4.8 x 0.5



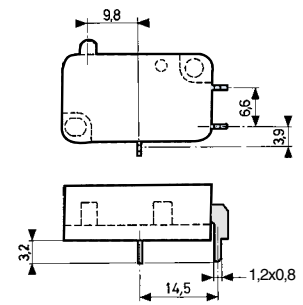
X1 for PCB, straight output



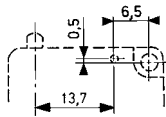
X2 for PCB, rear output



X3 for PCB, front output

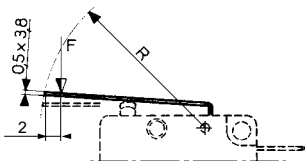


Actuator mounting position

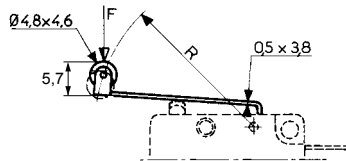


Actuators

153AX flat






153EX roller



Other shapes and dimensions: consult us

Actuators and mounting accessories

Part numbers for standard actuators

		79211671*			79211672*			79211674*		
Actuators		Flat 153AX R29.7			Roller 153EX R15.8			Roller 153 EX R28.7		
										
		831600	831603	831606	831600	831603	831606	831600	831603	831606
Operating position	mm	15.3 ^{±0.5}	15.3 ^{±0.5}	14.4 ^{±0.6}	20.5 ^{±0.45}	20.5 ^{±0.45}	20.3 ^{±0.55}	20.5 ^{±0.65}	20.5 ^{±0.65}	19.6 ^{±0.75}
Operating force - max.	N	2	1	2.6	4	2	5	2	1	2.6
Release force - min.	N	0.4	0.25	0.3	1	0.55	0.75	0.4	0.25	0.3
Pretravel - max.	mm	2.5	2.5	3.1	1.2	1.2	1.4	2.5	2.5	3.1
Differential travel max.	mm	0.6	0.8	1.5	0.3	0.4	0.7	0.6	0.8	1.5
Total travel max.	mm	4.6	4.6	4.6	2.3	2.3	2.3	4.6	4.6	4.6

*We recommend that levers are mounted in our factories. See preferred part numbers in table below.

For unmounted supply, please also order associated pin **79210424**

Part numbers for standard actuators

Actuators

79211694*

79211668*

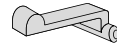
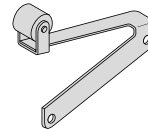
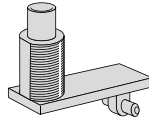
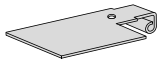
Two-pole 153A2XB R24**

Dummy roller 153FX R24.3**

Telescopic plunger 153L**

Flexible with roller 153B**

Plastic 153 V**



** Please consult us

83160 microswitches with referenced actuators

Actuators	153AX R29.7	153EX R15.8	153EX R28.7
	79211671	79211672	79211674
831600	I W2	●	83160134
	I W3	83160067	83160029
	I W6	83160115	83160069
831603	I W2	83160345	●
	I W3	83160347	83160327
	I W6	●	●
831606	I W2	●	●
	I W3	●	83160669
831606 SP3697	I W2	●	83160681
	I W3	●	83160680

Installation recommendations

See "Basic technical concepts"

How to order

Use the 8 digit part numbers when they are defined

Other cases, precise: Type of microswitch - Function - Connection - Actuator* - Adaptation*

* if needed

Example: 831600 I X1 153AX R29.7

Standard product

Product made to order

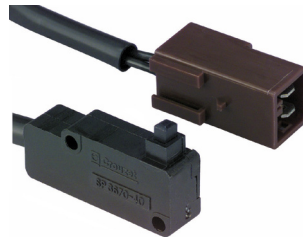


Contact us

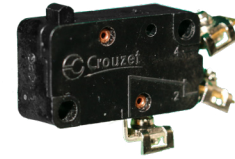
Examples of special adaptations



Special lever and angled W3 terminals



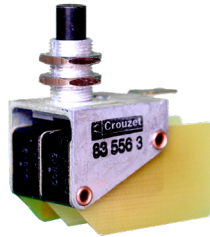
Full wiring with custom connector



Customised version for nuclear application. Has radiation-resistant housing, 180 °C max operating temperature, W5 screw terminals and magnetic blowout for highly inductive circuit switching at 250 V $\overline{\text{~}}$



Telescopic plunger with Ø12 mm adjustable fixing and 4 mm overtravel. Metal version for heavy duty (SP9603)



Telescopic plunger with Ø10 mm threaded barrel, metal bracket and plastic button. Single pole or double pole with staggered switchings (83556)

Warning:

The technical information contained herein is for informational purposes only and does not constitute a contractual commitment or a guarantee of performance or fitness for any particular purpose. Crouzet and its subsidiaries reserve the right to make any changes without notice. It is essential to consult us regarding any specific use or application of our products, and it is the purchaser's responsibility to verify, in particular through appropriate testing, that the product is suitable for the intended use. Under no circumstances shall our warranty apply, nor shall we be held liable, for any use of our products – including, but not limited to, any modification, addition, or use in combination with other electrical or electronic components, circuits, mounting systems, or any other unsuitable equipment or substance – that has not been expressly approved by us prior to the conclusion of the sale. The applicable contractual terms and conditions are exclusively those set out in the Crouzet proposal accepted by the customer and in the current general terms and conditions of sale.